

Chippendayle Lodge



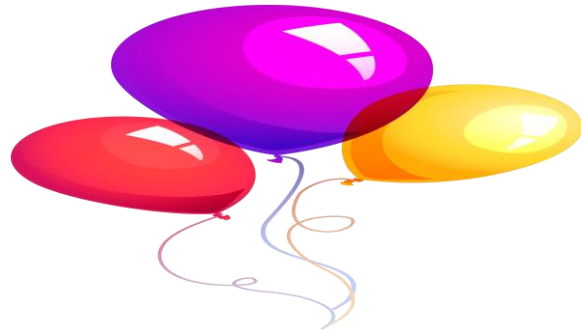
Newsletter

March 2022 Issue

Throughout our newsletter you can expect to read a little bit about what goes on here at Chippendayle Lodge, we hope you enjoy!



Birthdays



Residents celebrating their birthday in March
are...

Florence 98yrs

Joan 88yrs

Vincent 94yrs

Ralph 96yrs

Dorothy 102yrs

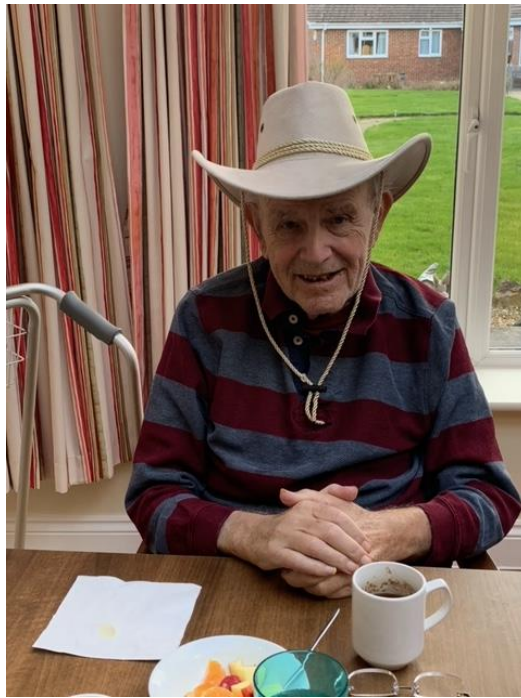
HAPPY BIRTHDAY TO YOU ALL !!!

A little of what we got up to in February.....

We were able to resume indoor entertainment!! So on 9th February we had Jasmine come to entertain with her Folk Rock Country Show and everyone had such good fun singing along, Dancing and dressing up.

Here are some photos from the afternoon.





Getting to know our staff

In the spotlight this month...

Elise



Elise has been promoted to Deputy Manager and we wish her all the best in her new role

Friends & Family

Some of you have been taking your loved ones home, for walks and out for meals which has been so lovely to see and hear about. Please do continue to book in your visits with us whether it be an indoor visit, outdoor visit or a skype call

We do get quite busy with visits so please do try to give us as much notice as possible. If you are thinking of visiting last minute, please do call us because we might have space to accommodate this!

Please keep an eye on your emails for regular updates regarding Chippendale Lodge.

Vacancies

We have some current room vacancies available here at Chippendayle Lodge.

You are now welcome to have a look round Chippendayle Lodge, if you wish to do so please do not hesitate to contact us on 01622 859230 to book this in. Here are some pictures of some of the rooms we have available;



Thank You
FOR YOUR
SUPPORT

Getting in Touch

Chippendayle Lodge , 10 Chippendayle Drive, Harrietsham, Maidstone, ME17 1AD

Tel: 01622 859230 Email: chippendaylelodge@charinghealthcare.co.uk

Website: www.charinghealthcare.co.uk